

IMAGE SIGN & LIGHTING
JOB NO. 1624-002-17

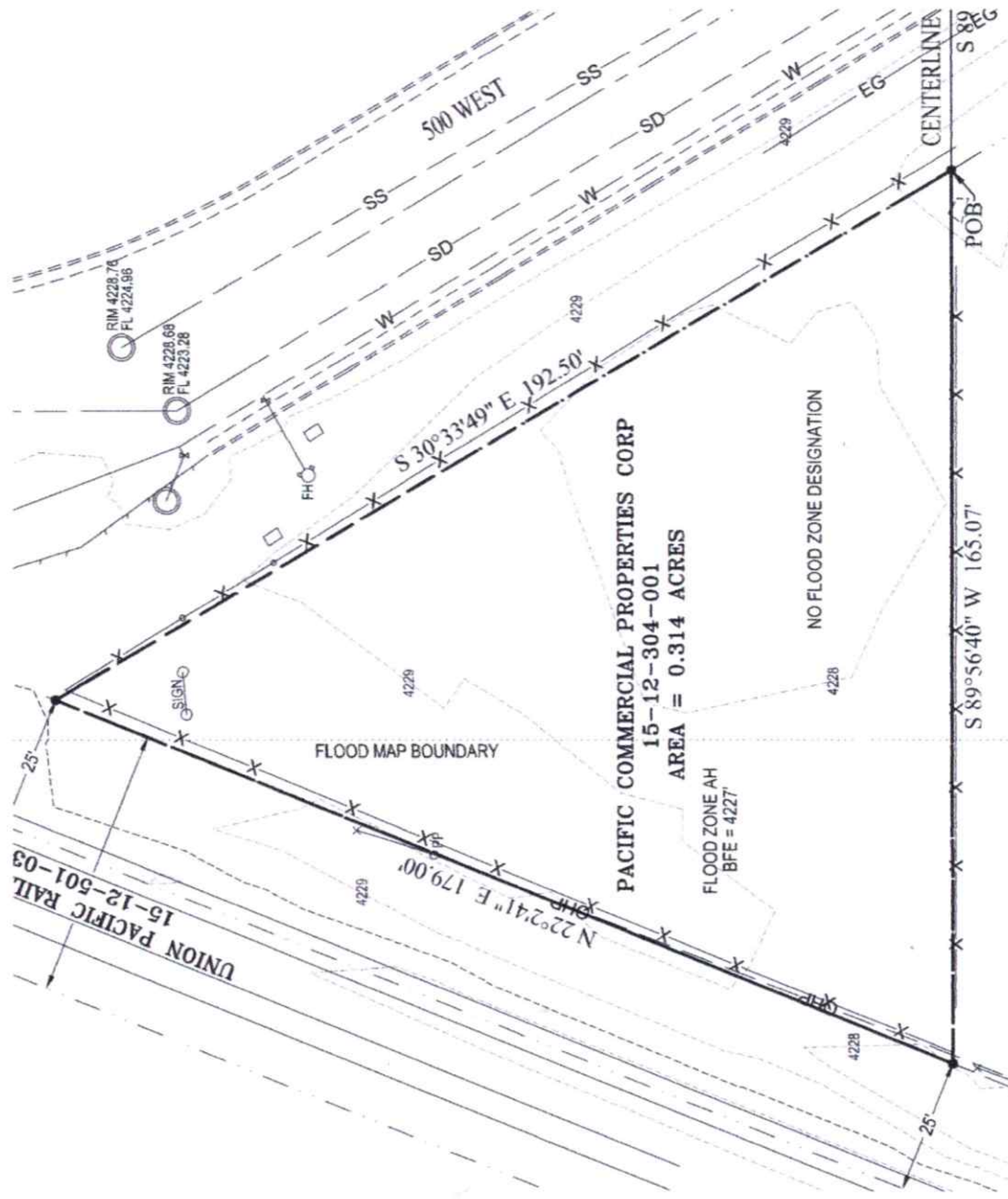


FIGURE 2
SITE PLAN

REFERENCE:
ADAPTED FROM DRAWING ENTITLED
"ALTA / ACSM LAND TITLE SURVEY" BY A.D.T. DATED APRIL 28, 2017

APPROXIMATE SCALE IN FEET
0 20 40

WE WOULD HAVE
1-2 EMPLOYEES
IN AND OUT.

WE WOULD BE
STORING UP TO
10 COMMERCIAL
VEHICLES AT A TIME
MOST TIMES IT WON'T
EVEN BE THAT MANY.



SURROUNDING PROPERTY
NORTH

NAMMO COMPOSITE
MANUFACTURING
1000 SOUTH 500 WEST

SOUTH

BRAHMA GROUP
1132 SOUTH 500 WEST

WEST

TRAYLINE
RAILROAD TRAX

EAST

1-15 1300 SOUTH OFF
RAMP (SB)



HEAVY DUTY TOWING & TRANSPORT
WWW.WESTCOASTTOWINGUTAH.COM
555 W. 220 S.
Unit# 201
Pleasant Grove, Utah 84062
801-836-7101

We are dedicated to leaving space better than we found it. We are looking to expand our coverage statewide, we are not a salvage /dismantler. We are in the business of heavy duty commercial towing & recovery, we deal in freight, semis, accident recovery, and short term storage of commercial vehicles and their cargo.

If approved we plan to run power to the location sought after at 1050 South 500 West, Salt Lake City. We want to make sure the location is well lit and install a security system. We understand there has been an on going issue in this area with homelessness, The transients have been cutting the fence and accessing the property and we want a well lit secure place. We understand how much work has gone into moving the rear by homeless camp, by the city of Salt Lake.

This property needs to be occupied and kept up for the benefit of the city of Salt Lake, the property own and surrounding businesses, so that we can jointly be successful in our mission.

Our revenue is in turn over, we do not make money if things are not moving, we need the land to store, : Cranes, Semi Trailers, Forklifts, heavy duty wreckers etc. The mission of keeping a well lit and secure facility is very key here.

This location is great for us because it has such close access to I-15 and surrounding Freeway access, which allows us quicker response times to clear the roadways in the even of a heavy duty accident that is blocking the roadway. We are looking for a location that will allow us faster response times, to these major accidents in the spaghetti bowl and major interchanges on the freeways.

The goal here is to have the community see our common goal to keeping this a SAFE CLEAN and WELL LIT area.

Thank You,

A handwritten signature in black ink that reads "Rob FACE". The signature is written in a cursive style with the first letters of "Rob" and "FACE" being capitalized and prominent.

Owner Rob Face

West Coast Heavy Duty Towing & Transport